

¹³C NMR spectrum of Triphenylene in CDCl₃



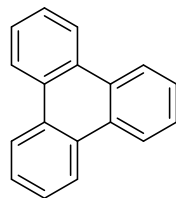
Current Data Parameters
NAME HB392c-700
EXPNO 2
PROCNO 1

F2 - Acquisition Parameters
Date_ 20211202
Time 12.23 h
INSTRUM CAB AV4 700 MHZ BASIC
PROBHD Z123726_0036 (
PULPROG zgpg30
TD 65536
SOLVENT CDCl₃
NS 8192
DS 0
SWH 41666.668 Hz
FIDRES 1.271566 Hz
AQ 0.7864320 sec
RG 101
DW 12.000 usec
DE 6.50 usec
TE 298.1 K
D1 0.20000000 sec
D11 0.03000000 sec
TD0 1
SFO1 176.1333317 MHz
NUC1 13C
P0 4.00 usec
P1 12.00 usec
PLW1 51.03099823 W
SFO2 700.4028016 MHz
NUC2 1H
CPDPRG[2] waltz16
PCPD2 65.00 usec
PLW2 10.11999989 W
PLW12 0.69958001 W
PLW13 0.35227001 W

F2 - Processing parameters
SI 32768
SF 176.1157234 MHz
WDW EM
SSB 0
LB 1.00 Hz
GB 0
PC 1.40

129.788
127.218
123.299

77.180
76.999
76.817



1

